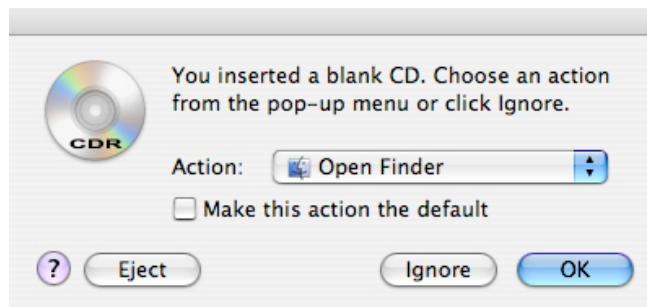


Burning a Data CD with the eMac and OSX

What you will need:

- A blank, recordable CD. These are usually labeled as **CD-R** (recordable CD) or **CD-RW** (re-recordable CD). *This set of instructions deals only with CD-R disks.*
- A computer with a CD drive capable of writing data to a recordable CD.
-

1. Insert a blank, recordable CD in the CD drive. When the CDR window appears click the **OK** button.



2. A CD icon will appear on the desktop.



Note: The icon of a blank recordable disk will have the letters **CDR** on the icon. The icon of a disk that already has data on it will have no letters.

Select Data To Burn To The Disk

3. Drag files and folders to be copied to the CD icon. You can double-click the CD icon to view its contents and arrange files as desired.

Burn Data To The Disk

4. There are several ways to initiate the process of burning data to the disk. Do one of the following:

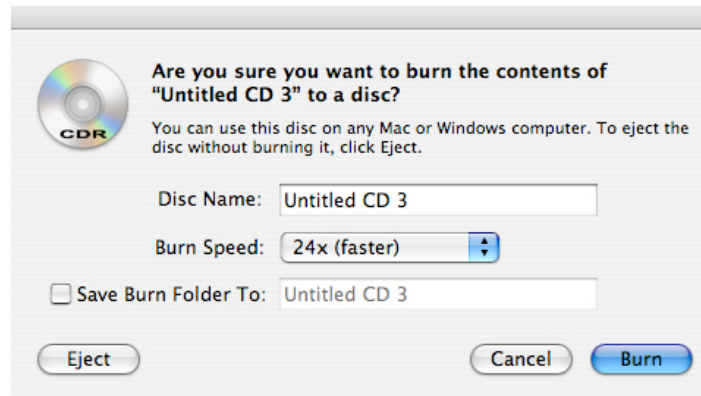
A-Drag the CD icon to the **Trash** in the **Dock**. The icon will change to the **Burn Disk** symbol.



B-Double-click the CD icon. In the top-right of the window you will see a button marked **Burn**.

C-Select the CD icon. From the **File** menu choose **Burn Disk...**

D-Hold down the **CTRL** key on the keyboard while clicking the mouse button. A drop-down menu will appear. Choose **Burn Disk** from the drop-down menu.



5. A dialog box will open asking you to name your disk and to select the **Burn Speed** of the disk. If you plan to use the CD on several different computers it is best to select the speed labeled as **most reliable** rather than the speed labeled **fastest**.
6. Click the **Burn** button. The process of writing data to the disk will begin. Be patient. This can take time.
7. Once the process is finished you may eject the disk.

Good Things To Know

Once a disk is burned you can't add more data to it (unless it's re-writable).

Ejecting a disk without burning it creates a **Burn Folder**. This type of folder allows you to set up files to be copied to a CD when a recordable CD is inserted.



Recordable CDs can be somewhat fragile. Make sure the shiny side is protected from scratches and dust.

Label your CDs as soon as they are burned. A permanent marker works best.

